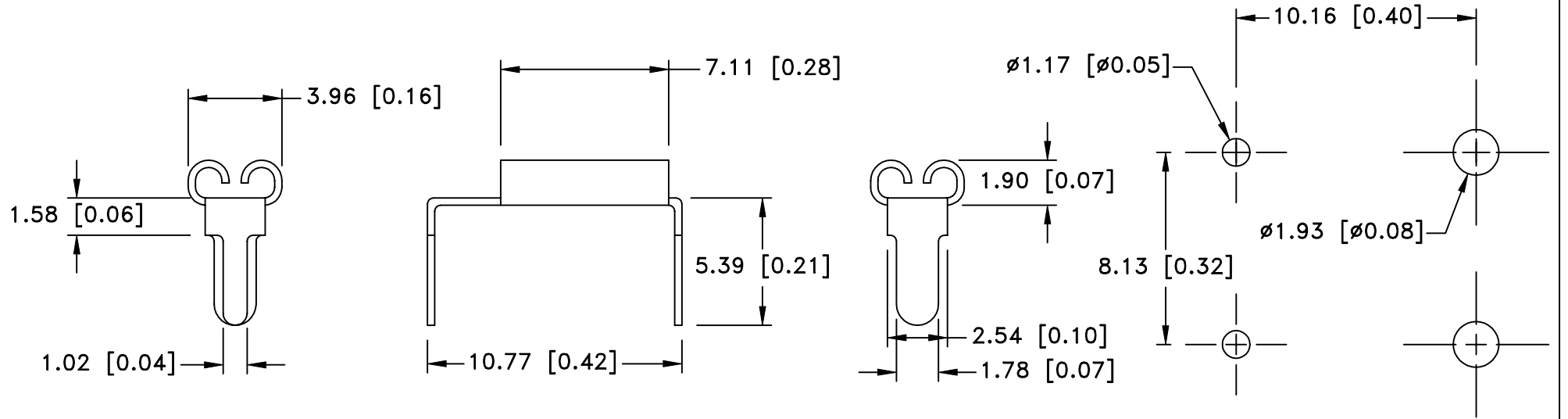



| Date | SYM | REVISION RECORD | AUTH | DR. | CK. |
|------|-----|-----------------|------|-----|-----|
| | | | | | |
| | | | | | |
| | | | | | |
| | | | | | |
| | | | | | |



MOUNTING DETAIL FOR TWO CLIPS

NOTES:

- MATERIAL:**
.012" BRASS, NICKLE PLTD.

| | | |
|--------------------------------|---|-----------------------------------|
| Tolerance (Except as noted) |  Memory Protection Devices, Inc 200 Broad Hollow Road, Farmingdale, New York 11735 | |
| decimal $\pm .5$ (.020) | Scale | Drawn By B.S. Approved By T.B. |
| Fractional $\pm .8$ (.030) | Title AUTO FUSE CLIP FOR .110 x .032 MINI BLADE | |
| Angular $\pm 3^\circ$ | Date 06/05/04 | Drawing Number BK-6008 |